

SCHOOL / SITE INTERNAL TRAFFIC MANAGEMENT PLAN

School Details	
School / Location	St Bernards Primary – Upper Mount Gravatt
School Principal	Daniel Hodge
Business Manager / WHSO	Debbie Aguilar – WHS & Risk Officer

Pick-up and drop-off points for students (e.g. private vehicles and private buses)

The following safety controls are in place to ensure that the picking up or dropping off students is undertaken in a safe manner:

- A designated 'Drop off / Pick up' area is located along the school fence prior to the internal zebra crossing in the car park.
- Entry is via Klumpp Rd through the shared driveway with Clairvaux Mackillop College (CMC). Traffic is to veer to the left then right towards the back of the Church and into the main car park.
- Parents and caregivers are to come to a complete stop, children are to exit the car at this point in a safe and quick manner under full supervision of said parent or caregiver.
- This area is designed to flow similar to a taxi rank with a maximum stopping time of two minutes. Please do not park or leave your vehicle unattended at any time in this area.
- Car park facility available to parents or caregivers wishing to park and walk students into school.



SCHOOL / SITE INTERNAL TRAFFIC MANAGEMENT PLAN

- St Bernard's has two exits
 - 1) Between the church and Presbytery exit onto Klumpp Road
 - 2) Drive past the Aspinall Centre to the top car park and exit via second driveway onto Logan Road.

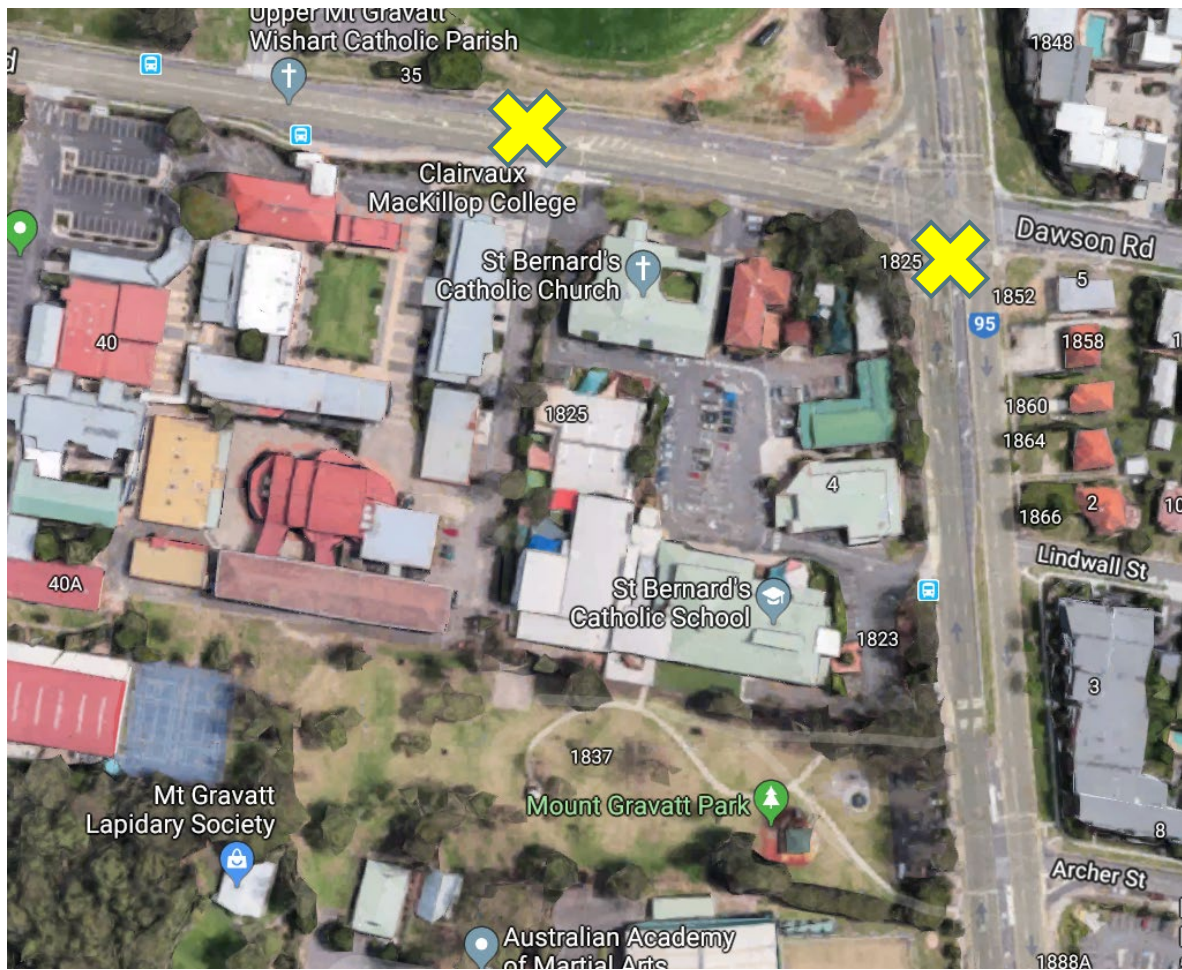
Please Note: the first driveway is for emergency services only.

- A bus zone is on Logan Road directly outside the school and is reserved for school bus services only. Motorists who unlawfully park in these spaces may be reported to Council's Suburban Safety and Parking Compliance team and/or the Queensland Police Service.
- A designated internal pedestrian crossing is in the main car park that leads to the Aspinall Centre, then continues across to the Church. This crossing is not manned at any time by traffic control, however, school supervision provided when using the crossing during learning hours.
- A designed buggy parking station for Clairvaux Mackillop College (CMC) Maintenance Team is located next to the Aspinall Centre.
- The Buggy is to follow traffic management flow and follow all internal speed limits, rules etc.,
- Speed restriction of 5kms/ph around car park are clearly displayed in various locations as you enter and exit the site, please abide by these speed restrictions.



SCHOOL / SITE INTERNAL TRAFFIC MANAGEMENT PLAN

- There is a button activated pedestrian crossings on Klump Road and Logan Road if accessing the main roads.

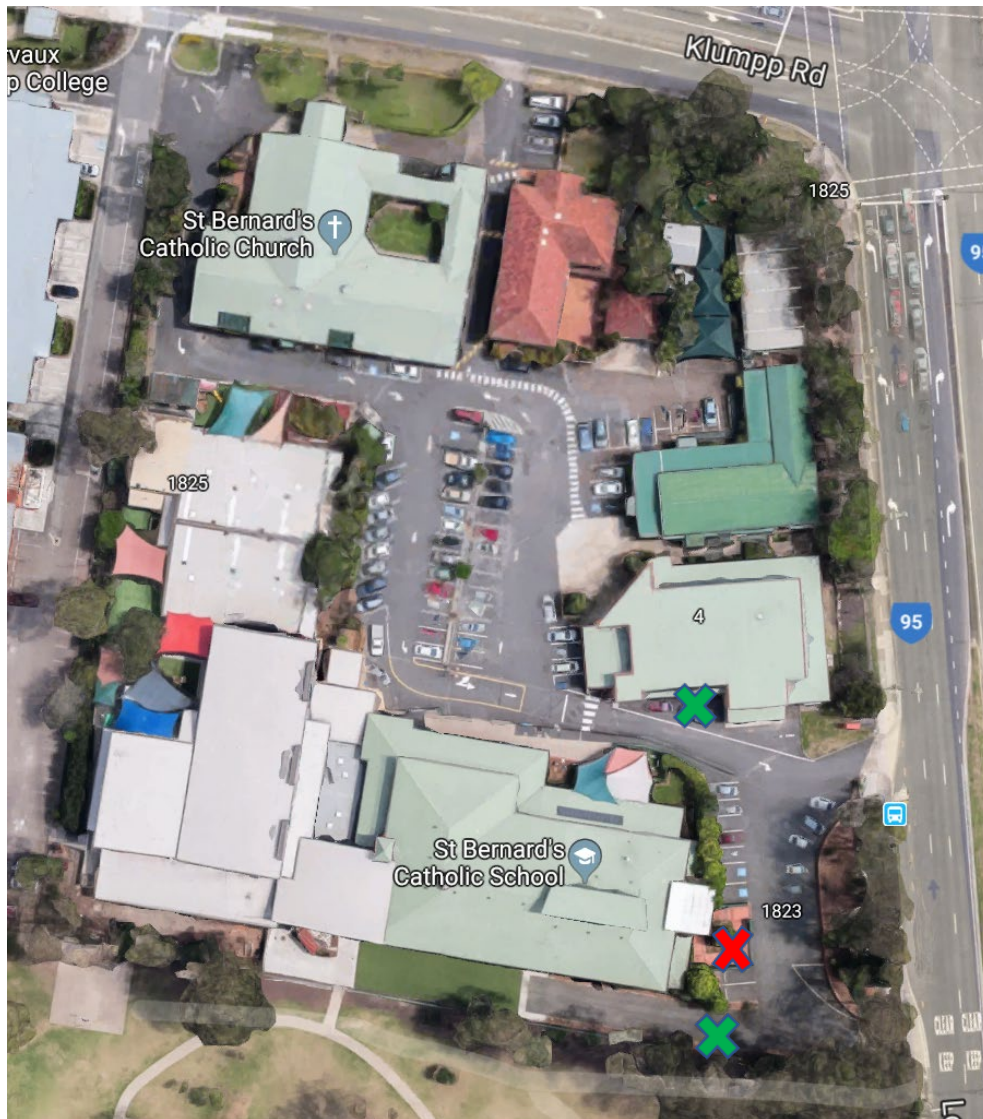


SCHOOL / SITE INTERNAL TRAFFIC MANAGEMENT PLAN

Courier and/or delivery drop off points

The following safety controls are in place to ensure that deliveries of various items to the workplace are undertaken in a safe manner:

- All couriers and/or delivery drivers must report to the school reception upon entering the school grounds. (marked in RED). For heavy items that need transporting, couriers can park in the area provided (marked in GREEN).
- Car park speed limit is 5km/hr. Speed limit signage is in various locations throughout the car park.



Safe passage of vehicles within the school (e.g. tractors, golf buggies, ride on mowers, Utes, school buses)

The following safety arrangements and features are in place when large vehicles or mobile plant such as tractors, golf buggies or ride on mowers are required to move around the school:

- Clairvaux Mackillop College (CMC) Maintenance Team buggy may move about the car park to access gates to provide service, however, speed limits to be followed, flashing light to be on whilst moving and keys are to be removed from the buggy when not in use.
- No vehicles, buggies or trailers permitted on the school site unless prior approval has been arranged with the principal or within holiday periods when students are not present.
- Emergency services excluded.
- Guideline: Walking speed.
- All other vehicles are required to park in designed car parks.

Parking arrangements

The following safety arrangements and features are in place to minimise the risks associated with vehicle parking within the school:

St Bernards has an area in the school grounds where cars can be parked. If this area is full, there are local streets located within a short walking distance of the school.



- There are two car park areas available for employees and visitors to the site whilst disabled car parking is in the top car park near reception entry.
- Signage identifying the whereabouts of the Administration building is displayed on the fence along the car park.

Special Events (e.g. Fetes, Sporting Events etc.)

Traffic control requirements for special events may vary and control measures are put in place during these events. During a fete and if rides are engaged the car park will be blocked off at entry and exit points. No vehicles can enter this area. The areas that are blocked are marked in yellow.

